



InSite™ | *L. mono* Glo | Rapid Environmental *Listeria* Species and *L. mono* Test



Hygiena's InSite™ *L. mono* Glo detects *Listeria* species and *L. monocytogenes* from surfaces in less than 48 hours. The dual test changes color in presence of *Listeria* species, while UV light reveals the presence of *L. mono*. The all-in-one self-contained test device reduces sample cross contamination risks that are common with other testing techniques.






Benefits:

- No complex lab equipment required
- Large pre-moistened sponge tip maximizes sample collection
- Neutralizing reagent minimizes sanitizer interference
- Selective enrichment media to maximize *Listeria* detection
- Easy-to-interpret color change
- UV fluorescence indicates pathogenic *Listeria*
- 24-hr presumptive positive results, 48-hr negative results
- Compatible with BAX® System Instruments as primary enrichment
- All-in-one test device reduces time, cost and labor over traditional screening methods

Sensitivity:

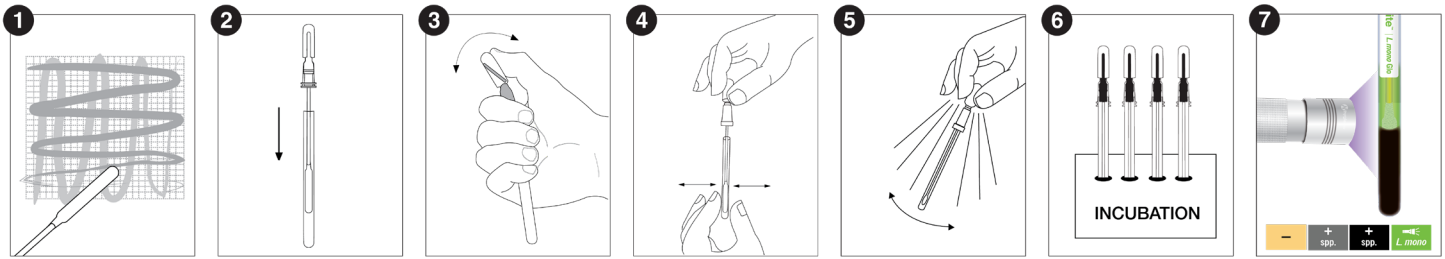
- Detects down to <10 CFU *Listeria* spp.
- Sensitive to <10 CFU *L. mono*
- Internally validated against ISO method for 100% inclusivity / 95% exclusivity
- AOAC-RI Performance Tested MethodSM validation

Interpretation of Results:

NATURAL LIGHT			UV LIGHT	
NEGATIVE	LISTERIA SPP.	LISTERIA SPP.	LISTERIA SPP.	L. MONO
—	+ spp.	+ spp.	+ spp.	+ spp.
				
YELLOW	GREY	BLACK	NO FLUORESCENCE	GREEN FLUORESCENCE
	PRESUMPTIVE POSITIVE FOR LISTERIA SPP.		NEGATIVE FOR L. MONO	POSITIVE FOR L. MONO

Catalog No.	Description	Quantity
ILMG050	InSite™ <i>L. mono</i> Glo Environmental <i>Listeria</i> Species and <i>L. mono</i> Test	50

InSite™ *L. mono* Glo Procedure



See an instructional demo at [HygienaTV](#) or [HygienaTV](#)

Related Products

InSite™ *Listeria*

For facilities who do not wish to screen for pathogenic *Listeria*, Hygiena® offers InSite™ *Listeria* which is an easy-to-use, self-contained environmental *Listeria* species test. Each device contains a chromogenic liquid media with antibiotics, growth enhancers, and color-changing compounds specific to *Listeria*.



InSite™ *Salmonella*

InSite™ *Salmonella* is an environmental *Salmonella* species test that is self-contained, easy-to-use, and does not require expensive lab equipment. Each device contains a chromogenic liquid media with antibiotics, growth enhancers, and color-changing compounds specific to *Salmonella*.



Digital Dry Block Incubators

Designed specifically for Hygiena test devices, our digital dry block incubators are available in two different sizes and come in multiple configurations.



BAX® System X5 and Q7 Instruments

The BAX System Instruments use advanced PCR technology to accurately and reliably identify foodborne pathogens in raw ingredients, finished products, and environmental samples. The automated DNA-based tests provide rapid results for 20 assays for pathogens like *Salmonella*, *Listeria*, and *E. coli*.



Catalog No.	Description	Quantity
ILC050 / ILC100	InSite™ <i>Listeria</i> Environmental <i>Listeria</i> Species Test	50 / 100
IS050	InSite™ <i>Salmonella</i> Environmental <i>Salmonella</i> Species Test	50
INCUBATOR	Small Format Digital Dry Block Incubator	1
INCUBATOR2	Lab Format Digital Dry Block Incubator	1
See Catalog	BAX System X5 and Q7 Instruments	1